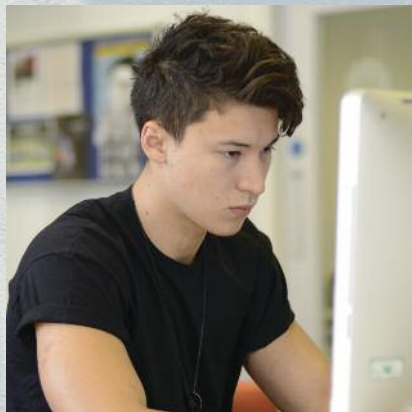


# ASHBOURNE

A LEVEL COLLEGE KENSINGTON



## CONTENTS

---

Ashbourne College	3	Oxbridge Programme	17
Principal	4	Location, Facilities and Accommodation	19
Results and University Destinations	5	Activities and Events	20
Personal Tutors	6	Extra-curricular Clubs	21
Individual Attention	7	A Level Subjects	23
Welfare	9	University Entrance	24
Mathematics and Sciences	10	Intensive A Level Courses	25
Humanities	11	GCSE Courses	26
Fine Art, Graphic Communication and Textile Design	12 - 13	Admissions Process	27
Drama and Music	14	Term Dates and Fees	28
Engineering Programme	15	Accreditation	29
Medical School Programme	15	Ashbourne Staff	30-31
Finance Programme	16		



Ashbourne is one of the best private colleges for A levels in the UK and has been one of the top two colleges in London by A level results for many years. Our students consistently achieve outstanding exam results with more than half attaining A or A\* at A level and going on to Russell Group universities.

Ashbourne's results far exceed the national average, as measured by value added, placing the college in the top 5% of schools and colleges in the UK. We encourage students to become confident, independent learners by offering comprehensive support and guidance through Personal Tutors, individual attention in class, subject specific clinics and peer group mentoring. Attendance and homework submission are strictly monitored as is performance in mock exams which take place each half term. Our ethos is informal and the relationship between teachers and students is founded on mutual respect, more like a university than a school. There are no uniforms and there is far more freedom than found at a typical school.

Ashbourne suits those who want to be independent with the assurance that they can draw on the guidance and support offered when necessary. We find that the students who do best are those who take full responsibility for their success in education.





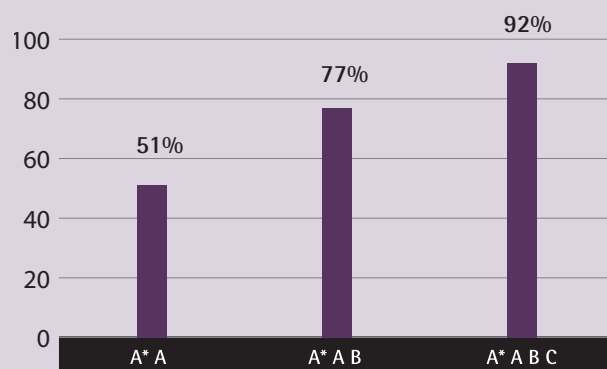
## Principal

### MICHAEL KIRBY

MSc (Birkbeck, London), BApSc (Toronto)

Mike founded Ashbourne College in 1981 and has since presided over its continuing academic development and success. Mike is a key figure in the promotion of independent education in the UK through organisations such as the Council for Independent Education (CIFE). He was formerly a lay member of the Admissions Panel for Medicine at UCL and is Head of Faculty for Mathematics and Physics, one of Ashbourne's most successful faculties. Mike studied Aerospace Engineering and Statistics at the Universities of Toronto and London.

### A level results 2012 – 2021



### University Destinations

The list below shows the most popular destinations of our A level graduates over the past five years. In that time 54% of our students have won a place at one of the Russell Group universities.

### Top University Destinations 2017 – 2021

University College London (UCL)	52
King's College	48
Queen Mary University	28
University of Arts London (UAL)	22
City University	19
University of Bristol	17
University of Warwick	16
University of Manchester	15
University of Westminster	15
Cambridge University	14
Imperial College	14



## Personal Tutors

Each student is assigned a Personal Tutor with whom they will meet once a week to discuss academic performance and any pastoral issues. They review half-termly mock grades and work with each student to help improve or enrich their performance. Personal Tutors play a pivotal role in facilitating communication between parents, teachers and students. It is never necessary to wait for half-term reports or parents' evenings to get in touch.

Personal Tutors also spend as much time as necessary, including many one-to-one sessions, ensuring that each student in their care makes a confident and effective application to university (UCAS). This includes encouraging and supporting students to engage in appropriate reading, work experience, research and possibly an Extended Project Qualification (EPQ) to strengthen their application.

The most important role of the Personal Tutor is to motivate students to achieve their academic personal best. They are the lynch pin of our system of individual attention. Their principal responsibility is to support and encourage each of their students to become independent learners not only to achieve immediate academic success but also to set a stage for success at university and beyond.

---

## Individual Attention

Ashbourne creates an ideal environment for students and teachers to engage and interact more effectively by limiting class sizes to 10 or fewer students. Individual attention at Ashbourne, however, extends far beyond the classroom. Outside of class students benefit from additional timetabled help from teachers, subject-specific clinics and advice from student mentors.

Our teachers not only encourage excellence from their students but have high expectations for themselves. Staff are encouraged and supported to appraise their performance and take up continuous professional development.

We work closely with students and parents through open communication and continual feedback to help our students attain their goals. We monitor attendance and completion of work assiduously and accept nothing less than total diligence. Parents and guardians may track performance and communicate any concerns directly to each student's Personal Tutor using the online parents' portal. The Personal Tutor will always intervene if performance fails to match potential.

Every half term our teachers issue a report on each of the students in their care. This includes comments on working and target grades, the quality and quantity of submitted work, the promptness of attendance and achievement in half-termly mock (practice) examinations.





## Welfare

Student welfare is a priority at Ashbourne and a vital aspect of each student's education. Good academic results depend on appropriate support, which begins with a careful appraisal at admission. This ensures that each student is in company with others of similar ability, ambition and aptitude. Our Designated Safeguarding Lead (DSL) reviews each application to ensure that Ashbourne can provide the appropriate emotional, psychological and physical support for each and every student.

Ashbourne has a zero-tolerance policy for such things as racial and sexual abuse, bullying, homophobia, drug use and violence. Students may report any concerns they might have, no matter how small, about their physical, emotional or psychological wellbeing to the DSL directly, their Personal Tutor or any member of staff. Staff are responsible for following up safeguarding reports to ensure that the concern has been dealt with satisfactorily.

All staff must train and retrain throughout the academic year to keep abreast of safeguarding legislation and guidance. The DSL is responsible for coordinating this training as well as overseeing our Personal Safety Health and Economic Education (PSHEE) programme in which all students of Years 10, 11 and 12 participate.





## Mathematics and Sciences

More than half of Ashbourne students study mathematics in one form or another, so our overall exam performance is contingent on these subjects. As an example, in the last official examination year 2019, 76% of exams in Further Mathematics and Physics were graded A or A\*.

These outstanding results are a credit to both our aspirational and hardworking students and superb teaching team who take full advantage of the many support mechanisms we have in place to help students reach their potential. These include timetabled sessions with teachers outside class times, peer mentoring schemes and opportunities to engage in extracurricular activities that broaden students' subject knowledge and research beyond the syllabus.

Our very ambitious and able students have won gold awards in the annual United Kingdom Mathematics Trust (UKMT) Senior Mathematics competition, with teams finishing in the top half of the national competition. We actively encourage our students to participate in the annual Mathematics and Physics Olympiads, in which they may study university level material, and to join our Astrophysics Club if they wish. Of course, our specialist programmes for Engineering, Finance and Medicine depend on our excellence in these subjects.



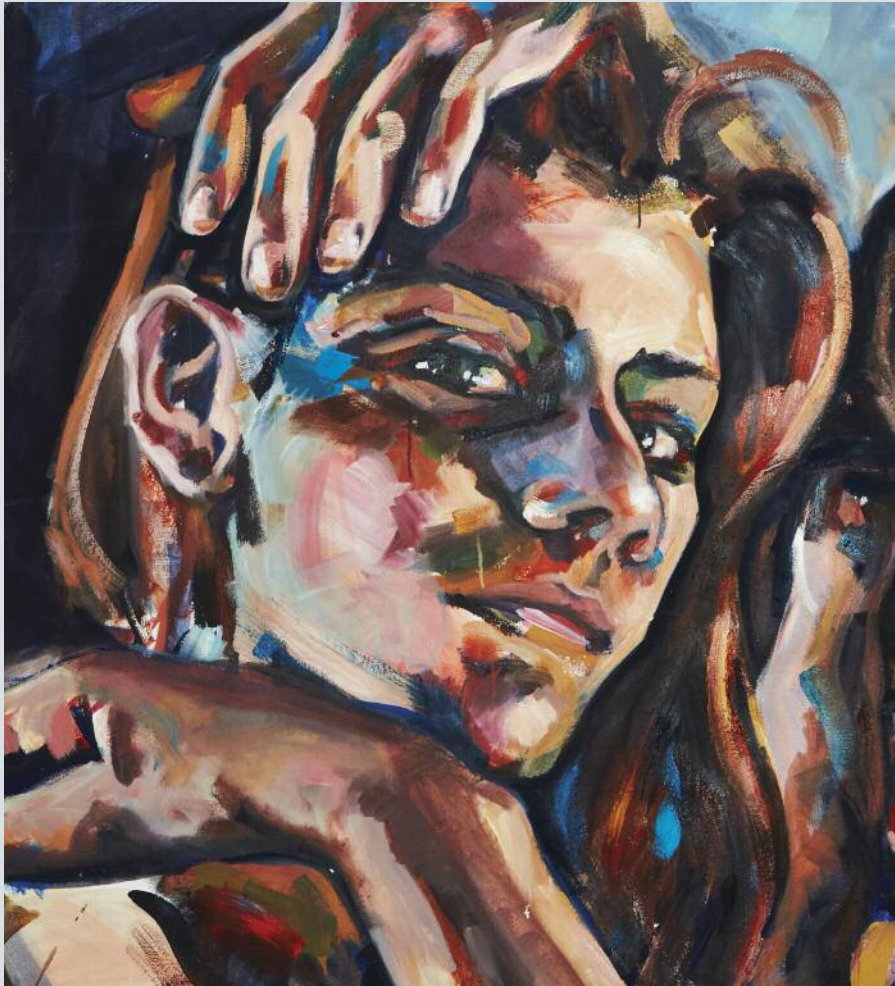
## Humanities

Ashbourne is diverse in many ways. The broad curriculum and wide selection of A level subjects on offer, exemplified within the Humanities Faculty, reflect the different personalities, interests and ambitions of our students. Subjects offered within this faculty extend from English Literature and History through Economics to Philosophy and Psychology. The quality of Ashbourne's Humanities Faculty is also evident from the number of students winning places each year at Cambridge to read subjects such as English Literature and Classics.

Ashbourne also offers A level courses in modern European languages such as French and Spanish as well as Arabic, Chinese, Italian, Japanese, Persian, Portuguese, Russian and Turkish for native speakers. International students are encouraged to take their native language at A level, alongside their other chosen subjects to maximise the strength of their UCAS application.







Fine Art



Graphic Communication



## Fine Art, Graphic Communication and Textile Design

Perhaps more than any other subject, individual attention plays a most important role in art and design. The opportunity to engage with a teacher one to one does wonders for students' confidence. They not only master new techniques but also develop the courage to use their imagination to develop their own personal style and expression.

The Art and Design Faculty offers expert guidance and comprehensive support for students applying for a wide range of art and design degree courses at university, such as Fine Art, Architecture, Graphic Design and Visual Effects, Fashion Design, Communication as well as Fashion Promotion. Students take part in group critiques to analyse and develop their work, join portfolio preparation workshops and receive one-to-one support during the university application process, including completing university task briefs and interview practice. They are also invited to additional workshops, open to all students, to explore a wide range of art and design areas such as silk screen printing, life drawing classes, digital design and fashion.

Ashbourne's superb London location is ideal for students to visit some of the world's finest art and design galleries, exhibitions, museums and events. This broadens their understanding and appreciation of art and design and helps them to contextualise and bring depth to their own work. Students are also offered outstanding opportunities to showcase their talents and artwork both at the college and further afield, as part of their professional development.



Textile Design



## Drama and Music

Ashbourne's Drama and Music students develop the academic, technical and creative skills to pursue a career in these fields, as well as to achieve the highest results to study at top UK universities. Students receive well-balanced tuition in theory and practice, thus combining academic rigour with the practical and creative demands of the courses.

Drama practical workshops are deliberately limited to five or six so students can benefit from the personal direction, encouragement and expertise of their teachers. Music students can take advantage of the dedicated music facilities to practise, compose and record using Mac computers and industry-standard software. Students also get the chance to see a great selection of world-class theatre productions and live performances.

### Auditions and Scholarships

Ashbourne offers scholarships to gifted and talented students. Candidates are invited to perform their chosen monologue or piece of music at auditions, which they then discuss with the panel at interview.

### Ashbourne Revue, Chamber Concerts and Creative Arts Event

Ashbourne offers fantastic opportunities for students to write, perform and direct in a wide variety of events to gain experience, showcase their talents and have fun. The Ashbourne Revue, which typically involves a significant number of the student body, the Creative Arts Event and Chamber Concerts are true highlights in the college calendar.

---

## Engineering Programme (AEP)

Ashbourne's specialist university programmes offer structured support and guidance to students applying for particularly competitive and demanding university courses. They are designed to give students the best possible chance of gaining a place at a top UK university.

The Engineering Programme prepares students to make compelling and competitive UCAS applications to a wide range of engineering degree courses. Students will learn about the different streams of engineering and how they relate to each other, as well as exploring the changing role of the engineer in contemporary society. Students take part in a series of seminars and talks, group projects and field visits, as well as preparing for subject-specific admissions tests and, where applicable, interviews.

## Medical School Programme (AMSP)

Ashbourne's Medical School Programme has been helping prospective doctors, dentists and all students interested in medical-related courses for more than 30 years. Students are given support with their personal statements and interviews, as well as preparation for the BMAT and UCAT tests required by various medical schools. A successful medical application involves a wide range of extra-curricular activity and the Programme guides students towards relevant work experience. Finally, they are given essential insights and information through the seminars and talks from medical professionals and past students.

The Programme is led by Amy Youngman, Faculty Head of Natural Sciences and Head of Sixth Form. Amy has a degree in Neuroscience from King's College London and direct experience interviewing Medical School applicants at UCL.





## Finance Programme (AFP)

Ashbourne Finance Programme students will deepen their understanding of global economic issues and current affairs through regular group seminars, events, workshops and trips. We take advantage of London's status as a financial hub and make field trips to Canary Wharf and the City, visiting the home of leading financial institutions. Students are offered valuable insights by professionals from the financial world, helping to shape their own career ambitions.

Students following the Programme are set real-life investment challenges where they have to put A level economic theories to the test. Students gain excellent experience in research, analysis and trading as well as the opportunity to practise their communication skills by pitching to a live panel. At budget time our programme leader hosts an event where the students can watch live coverage together so they can analyse and debate the chancellor's proposals the following week.

As part of the Programme, each student receives individual, expert guidance in their UCAS application including choosing the right university degree course for them and any interview practice required.



## Oxbridge Programme

The Oxbridge Programme provides students with a clear structure and comprehensive support for making a strong application to Oxford or Cambridge universities.

Applicants to Oxford and Cambridge need to achieve outstanding A level results but there are many other ways in which they must show suitability for these prestigious and demanding universities. The Programme covers all aspects of the Oxbridge application process, supporting students so that they can make sensible degree choices and engage in appropriate super-curricular activities before the formal application process begins. Participants will usually complete a 5000-word Extended Project Qualification (EPQ), which helps to demonstrate their intellectual curiosity and ambition. They must also write a distinctive and pertinent personal statement. As well as supporting students in these tasks, the Programme prepares them for the pre-interview assessment tests and interviews.

The advice and support that Ashbourne offers its students has led to excellent results, with the University of Cambridge being one of our most popular university destinations in recent years.

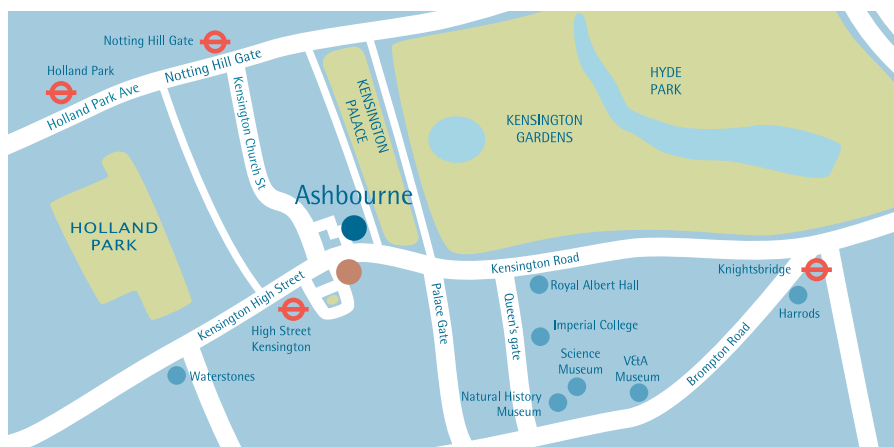
The Programme is led by Will Stockland, who studied at the University of Oxford and has many years' experience helping students gain places at Oxbridge.











- Ashbourne College main building
- Young Street premises

## Location, Facilities and Accommodation

Ashbourne is superbly located nearby Kensington Palace and Hyde Park. It benefits from this beautiful setting as well as the close proximity to such cultural icons as the Royal Albert Hall and the Victoria and Albert Museum.

Ashbourne has two premises within easy walking distance of each other situated at Old Court Place and Young Street, where Year 11 students and the Art Faculty are located. The college is fully equipped for all A level subjects and includes modern science laboratories, music practice space, multimedia recording and editing facilities for film, creative publishing, graphic design and computer animation and the latest audio-visual equipment in each classroom for online distance learning provision. We also provide wireless internet access throughout the college as well as an extensive range of onsite learning resources.

Ashbourne has no dedicated accommodation and is not a boarding school; however we do have a list of suppliers who have provided accommodation and guardianship for our students over many years.

## Types of Accommodation

Nearby are several hostels where students from Ashbourne and other colleges reside. Students may also choose to stay with a host family where they can study whilst experiencing life as part of an English family. The college has about 50 students who live in these types of accommodation, with almost equal numbers in hostels and homestays.

## Suppliers of Accommodation and Guardianship

Parents, students or guardians may use this list to arrange accommodation but must deal directly with these suppliers or make their own arrangements. Ashbourne does not inspect the accommodation offered by the providers and does not make any claim or guarantee as to the standard or safety of the premises listed. Nonetheless, we receive very few complaints about these providers and generally feedback has been very positive.



## Activities and Events

### Cultural Visit to Europe

Every year, students are offered the chance to visit a major European city during the Spring half-term. It is a great opportunity to experience the outstanding cultural heritage of art, architecture, music and theatre in cities such as Barcelona, Paris, Rome and Vienna, amongst others.

### Special Events

- Art gallery trips
- Ballet
- Bowling
- Chamber Concerts
- Christmas Revue
- Creative Arts Event
- Cirque du Soleil Shows
- Go Karting
- Laser Tag
- Maths Competition
- Opera
- Sushi Night
- Musical Theatre and musicals
- Tour of London for new students



## Extra-curricular Clubs

Extra-curricular activities have always been integral to life at Ashbourne, providing a platform for the varied talents and interests of the college's vibrant student body. They offer great opportunities for students to engage, make friends and have fun. In recent years, the activities programme has been expanded to feature numerous clubs, trips and social events.

Afrobeats Dance Club  
Artificial Intelligence with Python  
Ashbourne All Stars  
Football Club  
Chess Club  
Climbing/Bouldering Club  
Drama Club  
Engineering with Physical Computing  
Film Club  
Finance Programme

French Club  
K-POP Dance Club  
LGBTQ+  
Lunchtime Yoga Club  
Model United Nations  
Natural Sciences Club  
Netball Club  
Psychology Club  
Russian for Beginners Club  
Seminar Club  
The Reading Group  
UKMT Club









## A Level Subjects

Arabic\*

Biology

Chemistry

Chinese\*

Classical Civilisation

Computer Science

Drama & Theatre Studies

Economics

English Literature

Film Studies

Fine Art

French

Further Mathematics

Graphic Communication

History

History of Art

Italian\*

Mathematics

Music

Persian\*

Philosophy

Physics

Politics

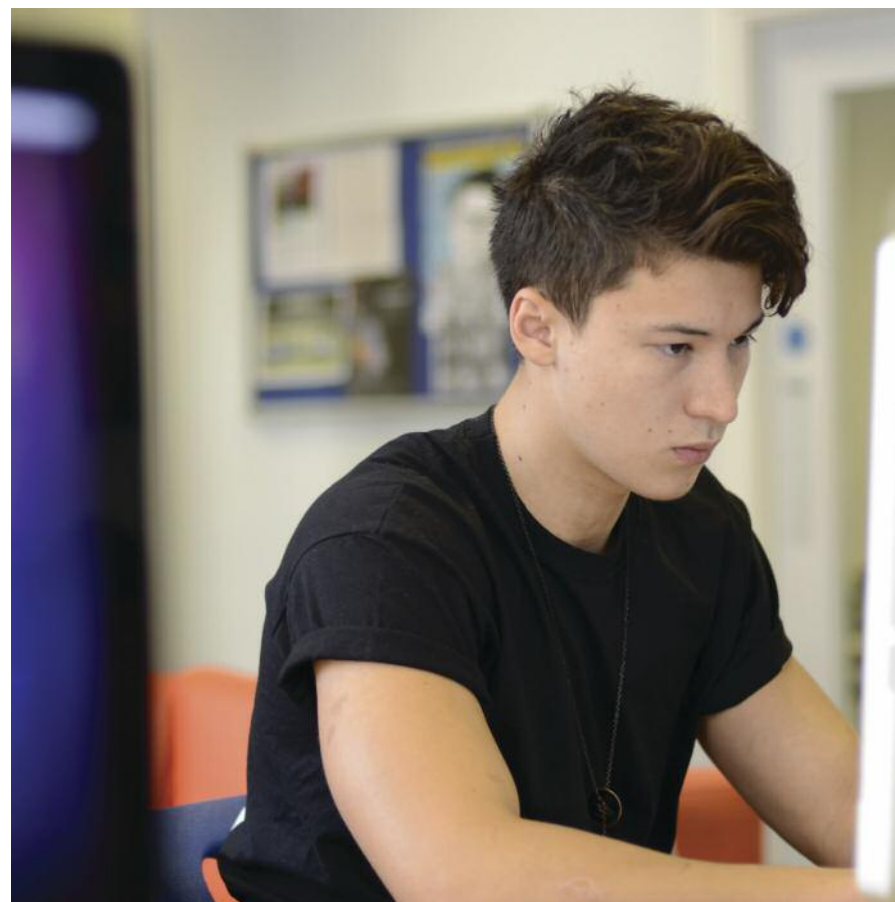
Psychology

Russian\*

Spanish

Textile Design

*\* Please consult with Admissions*





## University Entrance

Helping each student to make a confident application to university is one of the strengths of our UCAS Tutor system. Each student is designated a UCAS Tutor to oversee and provide feedback on all elements of the UCAS application process. This not only means completing the student reference and assisting with personal statements, but also giving suggestions on appropriate work experience, academic short courses and identifying the perfect destination and course for each student's personal needs and ambitions.

With the number of applications to UK universities increasing each year, applicants to undergraduate study must be able to differentiate their applications from others.

More than 50% of our students go on to study at top UK universities, including Cambridge, Imperial College, LSE and UCL.



---

## Intensive A Level Courses

Ashbourne's intensive A level courses include one-year A level courses, retake courses, 18-month A level courses beginning in January each year, transfers from AS to A2 years from other schools and Easter Revision courses.

On these courses, our students consistently achieve excellent exam results on these courses with nearly 60% of the exams resulting in A and A\*, rising to 80% on occasion. Students' improvement in academic performance, or value added, has helped place Ashbourne in the top 5% of schools and colleges offering A levels in the UK. More than 50% of our graduates go on to Russell Group universities.

Ashbourne has specialised in these courses from its beginnings more than 40 years ago and has been successful for many reasons. Individual attention is an important motivator; at Ashbourne it begins with small class sizes of 10 or fewer. This makes it easier for students to engage effectively, and, importantly, for teachers to provide more feedback with assigned work. Students receive significantly more teaching hours than is typical so they can complete the syllabus in a relaxed and confident manner with plenty of time for revision at the end of the course. They also sit mock exams, based on previous exam papers, each half term followed by constructive feedback. Ashbourne places great emphasis on teaching exam technique which we consider critical to achieving the best A level results.

We believe that building students' confidence is essential to their success and our Personal Tutors play an important role in mentoring, motivating and monitoring. This includes as much one to one time as necessary to produce the most compelling and effective application to university (UCAS).

Ashbourne embraces a friendly, informal and adult approach to education, much like a university, often presenting a refreshing change from more traditional schools. We believe this encourages independent thinking, learning and discipline. More than half of our students go on to Russell Group universities, which reflects the outstanding opportunities we offer to students who will benefit from the individual support, choice and flexibility we provide to help them reach the highest grades and achieve their personal and academic goals. All students benefit from being in the company of others with similar abilities and aspirations.

## GCSE Courses

Ashbourne welcomes students from many diverse educational backgrounds and assesses each student's needs and aspirations so we can offer them the best options for study at GCSE and then on to A level. The transition from GCSE to A level requires a step up in maturity and independence so we aim to establish the strongest possible foundations for future study. Students who successfully complete the Ashbourne GCSE programme are guaranteed a place to study A levels.

Supervision is much closer than at A level but students still enjoy the informal relationship between teachers and students which attracts many of our students to us. Study is structured with a strong exam focus so students are thoroughly prepared for the move to A level. Students are guided to develop life skills, sound career and A level choices and to become independent and self-reliant learners through our PSHEE (Personal, Social, Health and Economic Education) course that runs alongside GCSEs.

### GCSE AT YEAR 11

Most students follow the one-year GCSE course (Year 11) that is part of a three-year programme leading to A level qualifications (Year 12 and 13). Students typically complete nine GCSEs, comprising all core subjects and their chosen optional subjects, in one year.

### GCSE AT YEAR 10

Students who are academically capable may follow the two-year course (Year 10), which allows them to complete all core GCSE subjects in the first year before taking up their optional GCSE subjects and one or two A level subjects in the second year; effectively beginning A level study one year early.

GCSE core (compulsory) subjects: Mathematics, Double Science, English Language, English Literature, PSHEE and Sports.

Optional subjects\*: French, Spanish, Drama, Computing, History, Music, Economics, Art & Design.

\* Please contact Admissions as subject availability may vary.

## Admissions Process

Ashbourne aims for all A level students to achieve the highest grades possible. To ensure that Ashbourne is the right choice, we interview and assess each student. The best option is for students to come to the college in person for an interview and to take a tour of the premises.

To prepare for the interview we ask that students spend some time beforehand writing a personal statement of not more than 500 words. Much like UCAS, this should deal with subject choices, ambitions, achievements and interests. The interview will also provide an opportunity to discuss any special provisions or medical considerations that we should take into account. It will last for twenty to thirty minutes and will be followed by a tour of the college. We may ask for additional assessments depending on the subjects applied for. For example, art students will need to submit artwork, music students a theory test and an audition, science students a maths test. All students will be asked to sit a critical thinking essay-based examination.

Candidates need to submit a copy of the most recent school reports, their personal statement, their passport and a copy of any other relevant supporting documents.





## Term Dates 2022 / 23

### Autumn Term

**First day of term**  
Monday 5th September 2022

**Half-term**  
Monday 24th October to  
Friday 28th October 2022

**End of term**  
Friday 16th December 2022

### Spring Term

**First day of term for returning students**  
Tuesday 3rd January 2023

**Half-term**  
Monday 13th February to  
Friday 17th February 2023

**End of term**  
Friday 24th March 2023

### Easter Revision

**Week 1**  
Monday 27th March 2023

**Week 2**  
Monday 3rd April 2023

**Week 3**  
Monday 10th April 2023

### Summer Term

**First day of term**  
Monday 17th April 2023

*There is no half-term or study leave,  
except for Bank Holidays*

**End of term**  
Friday 26th May 2023

## Fees 2022 / 23

### A Level / GCSE Courses

Home students per term	£9,975
International students per term	£10,500

### Additional fees

Registration fee	£300
A level exams fees per subject	£250
GCSE exams fees per subject	£125
Refundable book deposit	£250
Individual tuition per hour	£100
Practical fees per subject, per term (for A level students of Fine Art, Graphics, Music, Textiles, Drama and Sciences)	£250

## Accreditation

Ashbourne achieved an outstanding OFSTED report at its most recent inspection (December 2022). Outstanding in all categories: overall effectiveness, quality of education, behaviour and attitudes, personal development, leadership and management and sixth-form provision.

Ashbourne was also one of the first private colleges to achieve Sponsor status from the government body UKVI (United Kingdom Visa Immigration).





## ASHBOURNE STAFF

### Principal Head of Mathematics and Physics Faculty

**Michael Kirby**

BAPSc Aerospace Engineering  
(Toronto), MSc Statistics (Birkbeck)  
*Further Mathematics*

### Director of Studies Head of Sixth Form Head of Middle School

**Lee Kirby**

*SEND Coordinator, Deputy  
Safeguarding Lead*

### Assistant Director of Studies Leader of Faculties Head of Humanities Faculty

**James Wykes**

BA English (Wales), MA Modern  
Literature in English (Birkbeck), PGCE  
(King's College)  
*English Literature*

### Designated Safeguarding Lead

**Frances Burns**

BA General (Liverpool)  
MA Drama (Ohio)

### Head of Sixth Form Careers Lead

**Sean Pillai**

MA Civil Engineering with  
Business Management (Warwick), QTS  
*Mathematics*

### Head of Sixth Form Head of Natural Sciences Faculty Medical School Lead

**Amy Youngman**

BSc Neuroscience (King's College), QTS  
*Biology*

### Head of Finance and Computer Science Faculty

**Ruchi Agarwal**

Bcom (Delhi), MSc Computer  
Applications (Meerut), PGCE ICT (IOE)  
*Computer Science*

### Head of Multi-Media and Social Science Faculty

**Dennis Fulcher**

BSc Sociology (Kingston),  
MA Politics and Government  
(London Metropolitan),  
PGCE (Greenwich)  
*Film Studies, Politics*

### Head of Languages Faculty

**Alberto Lado Rey**

BA English Language, PGCE  
(Santiago de Compostela), MA  
Hispanic Studies (UCL)  
*Film Studies, Spanish*

### Head of Culture and Society Faculty Oxbridge Programme Lead

**Will Stockland**

MA History of Art Hons (Edinburgh)  
*History of Art*

### **Benvinda Alves**

BA English, MA English (Paris  
Nanterre)  
*French*

### **Philip Arnold**

BSc Biological Studies, MSc Climate  
Change Science and Policy (Warwick)  
*Biology  
Personal Tutor*

### **Jack Bagness**

MSc Physics (Imperial), BSc Physics,  
Astrophysics and Cosmology  
(Lancaster)  
*Mathematics  
Physics*

### **Cristina Bottigella**

BA Italian Literature and  
Contemporary Art (Milan), MA  
Cultural Policy (City)  
*Italian*

### **Joanna Budden**

BA History (Leeds), PGCE (Manchester  
Metropolitan)  
*History*

### **Gerardo Carballo**

BA English Philosophy (Santiago de  
Compostela), BA Combined Studies  
(Wolverhampton), MA Film Studies  
(UCL), QTS  
*Spanish*

### **Brendan Casey**

BSc Economics (LSE), BEd (Greenwich)  
*Economics*

### **George Chaldezos**

BA Classical Civilisation (Thessaloniki),  
PhD Classical Civilisation (Cambridge),  
PGCE (UCL)  
*Classical Civilisation*

### **Nicholas Cheeseman**

MA Fine Art (Chelsea College of Arts)  
*Fine Art*

### **Richard Clark**

MA Mathematics (Bath), PGCE  
(Oxford)  
*Mathematics*

### **John Curran**

BSc Economics (CNA), MA Economics  
Education (UCL), MEd Policy, Research  
& Professional Practice (London  
Metropolitan)  
*Economics*

### **Philip Ellis-Martin**

BA (Hons) Mathematics (Warwick  
University); PGCE Secondary  
Mathematics (University of East  
London)  
*Mathematics*

### **Alexander Goodwin**

BSc Medical Science, PGDip Education  
(Birmingham)  
*Chemistry  
Personal Tutor*

### **Jak Kirby**

BA Applied Art (Silapakorn)  
*Graphic Communication*

### **George Kontos**

BEng Electronic and Electrical  
Engineering (Surrey), MRes Computer  
Science and Artificial Intelligence  
(Sussex), PGCE (Brighton)  
*Computer Science*

### **Caterina Lewis**

BA Fine Art, MA Fine Art (Central Saint  
Martin's), PGCE Art and Design (IOE)  
*Fine Art*

### **Adam McMaster**

BSc Economics and Political Science  
(Birmingham)  
*Economics  
Finance Programme Lead*

### **Lauren Moorley**

MA English (UCL), PGCE (IOE)  
*English Language, English Literature*

### **Chella Nathan**

BA Engineering (North London), BSc  
Physics (Jaffna) MA Mathematics  
(Open University), PGCE (Greenwich)  
*Mathematics, Further Mathematics,  
Physics*

### **Virash Patel**

BSc Chemistry, PhD Chemistry  
(North London)  
*Chemistry*

### **Michael Peat**

BA Divinity (UCL), BSc Physics  
(Birmingham)  
*Philosophy*

### **Katie Pettitt**

BA History of Art and English  
(Birmingham), MA Contemporary Art,  
Theory & Criticism (Essex), PGCE (UEL)  
*History of Art, English Literature  
Personal Tutor*

### **Leona Potter**

BSc Psychology (Leeds), PGCE  
(Canterbury Christ Church)  
*Psychology*

### **Barry Rhule**

BSc Science (North London), PhD  
Philosophy (UCL)  
*Mathematics, Further Mathematics,  
Physics*

**Eleanor Ryan**

BA Teaching (Australian Catholic)  
*English Language, English Literature, IELTS*  
*Personal Tutor*

**Wesley Rykalski**

BA History, MA Medieval Studies (UCL)  
*History*

**Madeeha Saad**

BSc Mathematical Sciences (Open University), MSc Medical Statistics (LSHTM)  
*Mathematics*

**Abdul Sami**

BSc Pure Mathematics, MSc Science in Mathematics (UCL), PhD Philosophy (Imperial College)  
*Mathematics, Further Mathematics*

**Imran Shah**

BSc Physics (Imperial College)  
*Mathematics, Physics*

**Stefania Spinu**

BA Economics (Bucharest), MA Economic Policy and Analysis, Economics of Sustainable Development (Nantes), PGCE Economics (UCL)  
*Economics*

**Peter Stanton**

BSc History & Philosophy of Science (UCL), PGCE Secondary Science (London Metropolitan), QTS  
*Physics*

**Dina Taylor**

BA English and German Philology (Nizhny Tagil), PGCE (Open University)  
*Russian*

**Sarah Thompson**

BA Human Sciences (Oxford), MSc Neuroscience (UCL)  
*Psychology*

**Christopher Todd**

BSc Chemistry (East Anglia), PGCE (Roehampton)  
*Chemistry*

**Sakae Ueno**

Diploma in Floral Art & Design (NAFAS), Japanese Language Teachers Training Course (Japanese Education Teachers Society), Japanese Teachers Training (Asahi Culture Center)  
*Japanese*

**Michael Wilkinson**

BA Politics (SOAS), MSc Politics and Sociology (Birkbeck)  
*Politics*

**Yat-Soon Yeo**

BA Music, MA Music, Historical Musicology (King's College), PGCE Harpiscord and Conducting (Guildhall School of Music and Drama), PCGE Secondary Music (IOE)  
*Music*

**Mark Youngman**

BSc Biochemistry (Southampton)  
*Biology, Science*

**Admissions, Finance and Marketing****Suzanna Liu**

BA French and German (King's College)  
*Finance, Visas and Deputy Head of Admissions*

**Marcus Loudon**

BA English and American Literature and Spanish (Kent)  
*Deputy Head of Admissions*

**Anh Nguyen**

BA Graphic Design New Media (UCA)  
*Deputy Head of Admissions and Marketing*

**Facilities****Fabio Carpena**

*Facilities Manager*

**Jerome Carasco**

*Facilities Assistant*

**Administration****Kevin Chik**

*College Administrator*

**Mani Giri**

*Compliance and Registration Officer*

**Sharan Kandola-Singh**

*Attendance Officer*

**Christina Kuo**

*College Administrator*

**Hien Nguyen**

*Head of Administration*

**Tracy Nwokoma**

*Careers and Event Officer, PA to Director of Studies*

**Simone Shaw**

*Nominated Safeguarding Director and SEND Assessor*

**Marita Thomas**

*College Administrator and Academic Support*

**Sean Yip**

*College Administrator*



# ASHBOURNE

A LEVEL COLLEGE KENSINGTON



17 Old Court Place, Kensington, London W8 4PL

+44 (0)20 7937 3858

[ashbournecollege.co.uk](http://ashbournecollege.co.uk)